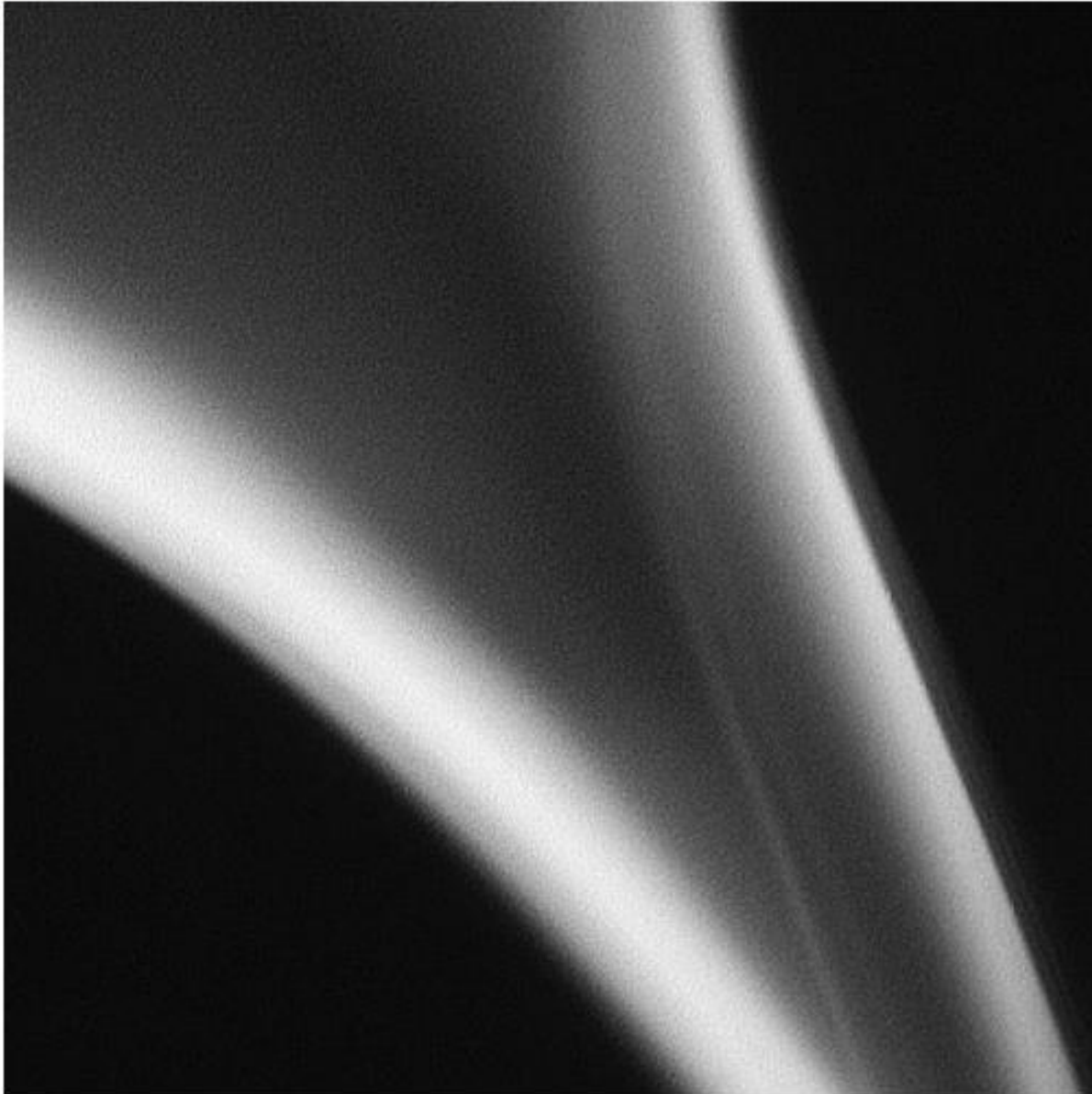
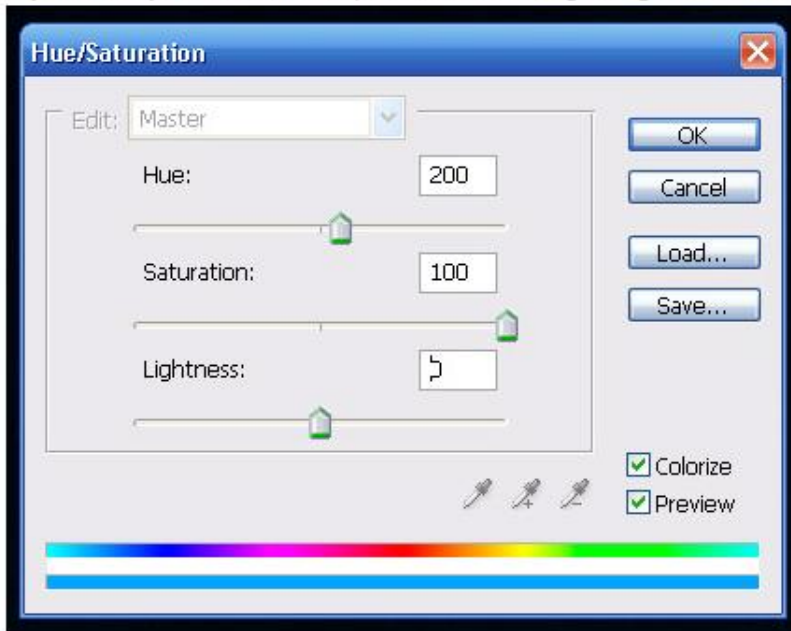


Colored Smoke Tutorial

1. Start with this close up of smoke on a black background:



2. Double-click the background layer to create a new editable layer. Add a Hue/Saturation Adjustment Layer (Layer > New Adjustment Layer > Hue/Saturation) and use the following settings to turn the smoke blue:



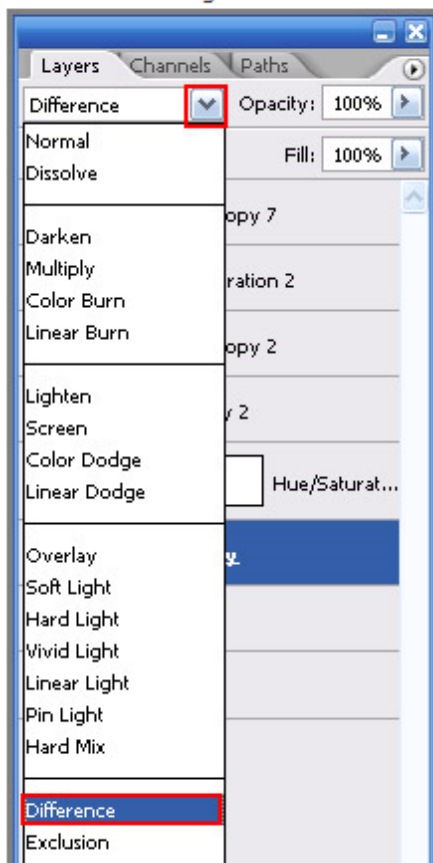
3. Right-click the hue/saturation layer and click 'Merge Down' to combine the layer and color.



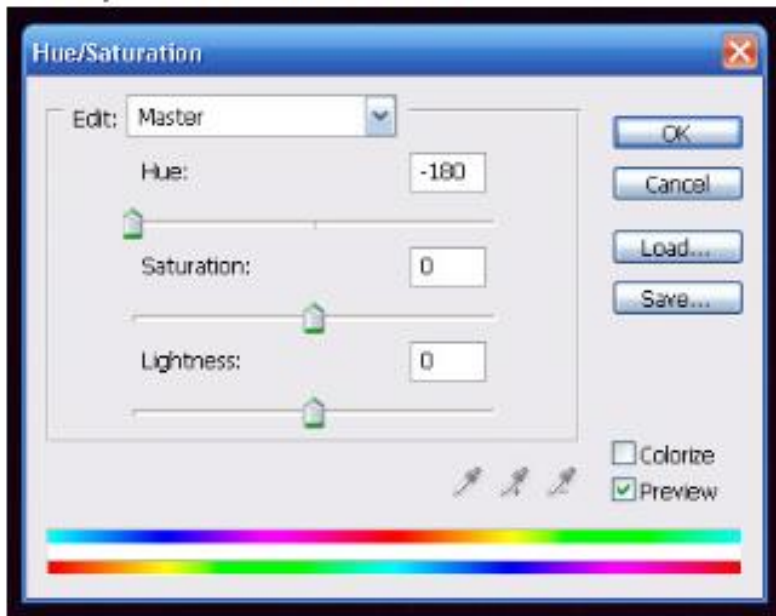
Now you should have one layer that looks like this:



4. Duplicate your layer (Ctrl+J) and set the blending mode of the new layer to 'Difference'. At first, this will turn the image black, but that will soon change. **UPDATE: Move the new layer over to the right 50 pixels or so, and colors should appear again.**



5. Add a Hue/Saturation layer to the new layer (like in step 2). Make sure 'Preview' is checked, and move the Hue slider back and forth until you like the result. Here's what I used:



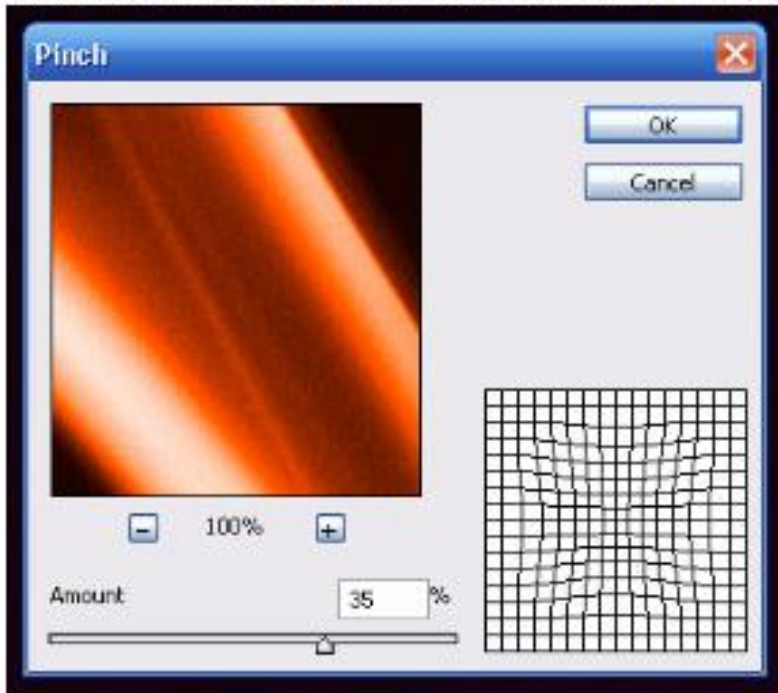
For this result:



- Right click the Hue/Saturation layer and 'Merge Down' (like in step 3). Duplicate your newly merged layer. You should now have 3 layers of smoke and an image like this.



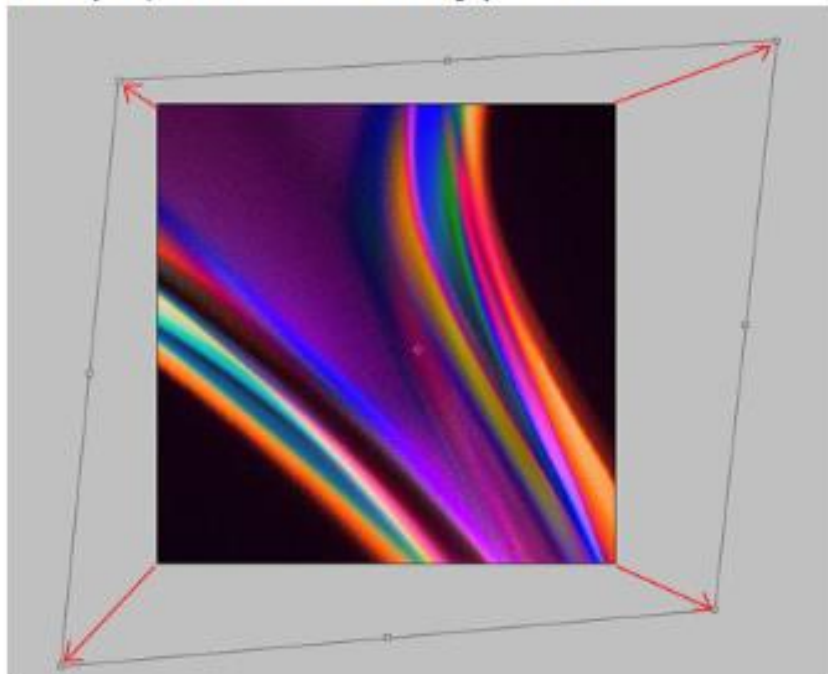
7. To add some variation, I used a 'Pinch' filter (Filters > Distort > Pinch) on the 3rd layer with this setting:



Which should produce this:



8. You can continue to make the image more complex by adding more layers. Let's do one more. Duplicate the 3rd layer. With your new layer, go to Edit > Transform > Distort. Grab each corner handle and pull them outward to make this layer a little wider and differently shaped than the others. Here's roughly how I did it:



And enjoy the end result:



9. It's easy to switch the layers around, try out different blending modes and hue/saturation layers to get a variety of images. Here are a couple variations:



Try an extra layer with 'Color Dodge' blending mode to get a brighter look:



9. It's easy to switch the layers around, try out different blending modes and hue/saturation layers to get a variety of images. Here are a couple variations:



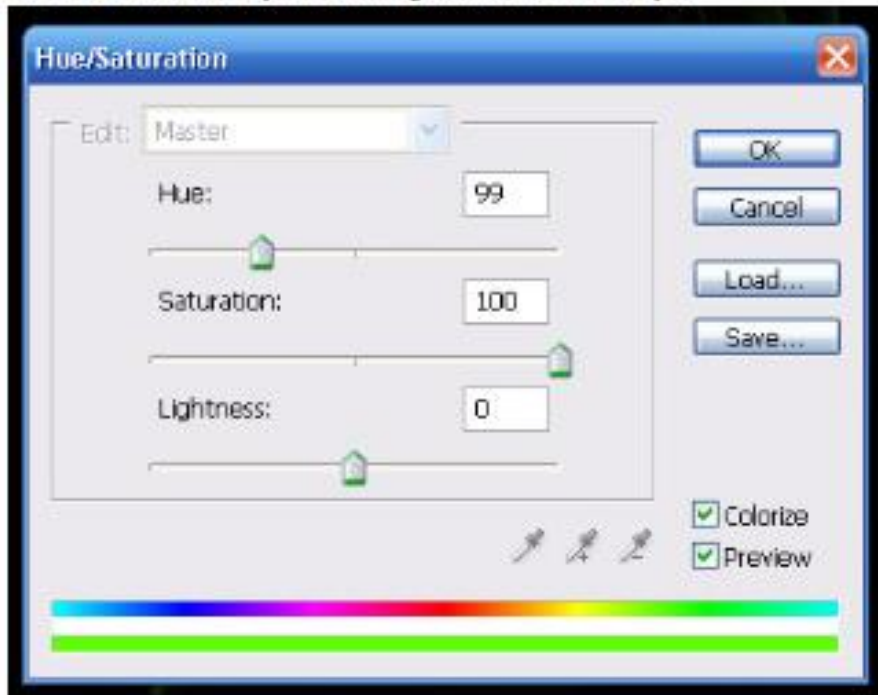
Try an extra layer with 'Color Dodge' blending mode to get a brighter look:



10. Let's try one with a different smoke pattern. Start with this beautiful image I found on Flickr. Here is the page it came from: [original image](#). It is licensed under [Creative Commons Attribution](#). Check out the photographer's work [here](#) - it's awesome.



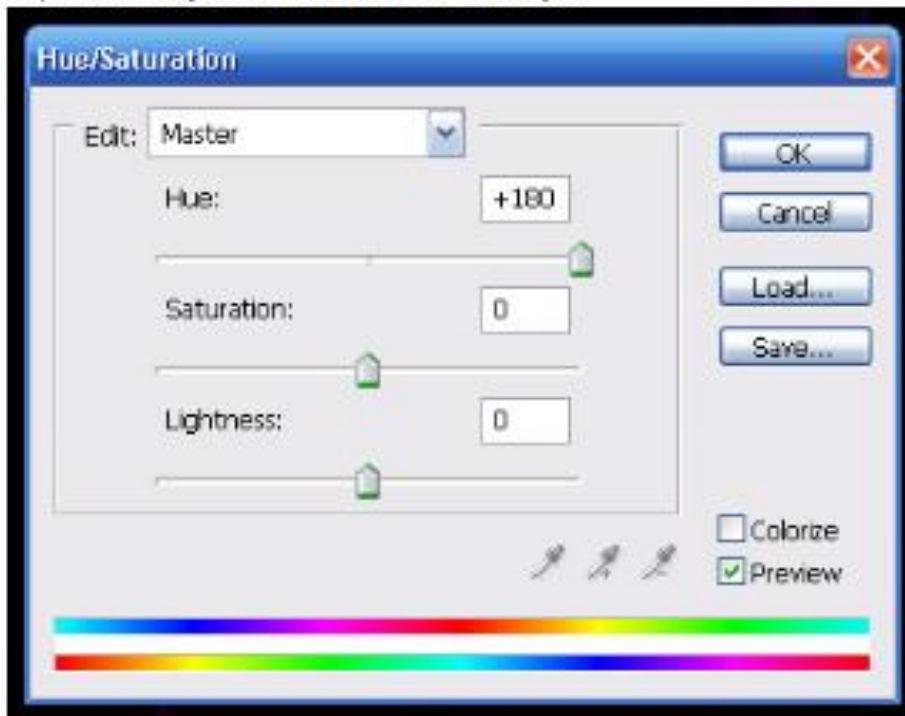
11. Add a hue/saturation layer, then merge it with the smoke layer.



For this result:



12. Duplicate this layer and add a hue/saturation layer.



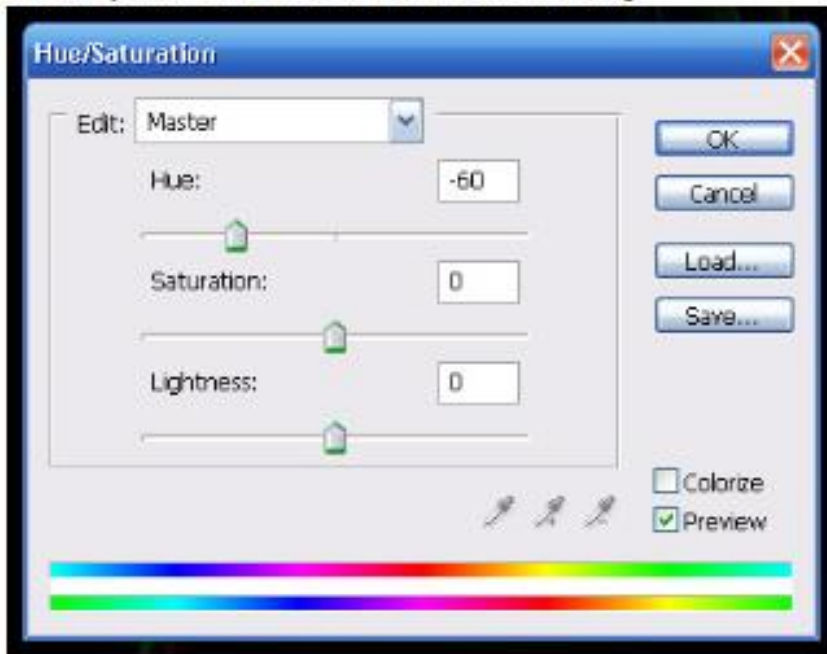
The 2nd layer should now be purple. Merge it with the hue/saturation layer as we've been doing.



13. Change the blending mode of the 2nd layer to Difference, then move it a few pixels away from the 1st layer so green and purple are both visible.



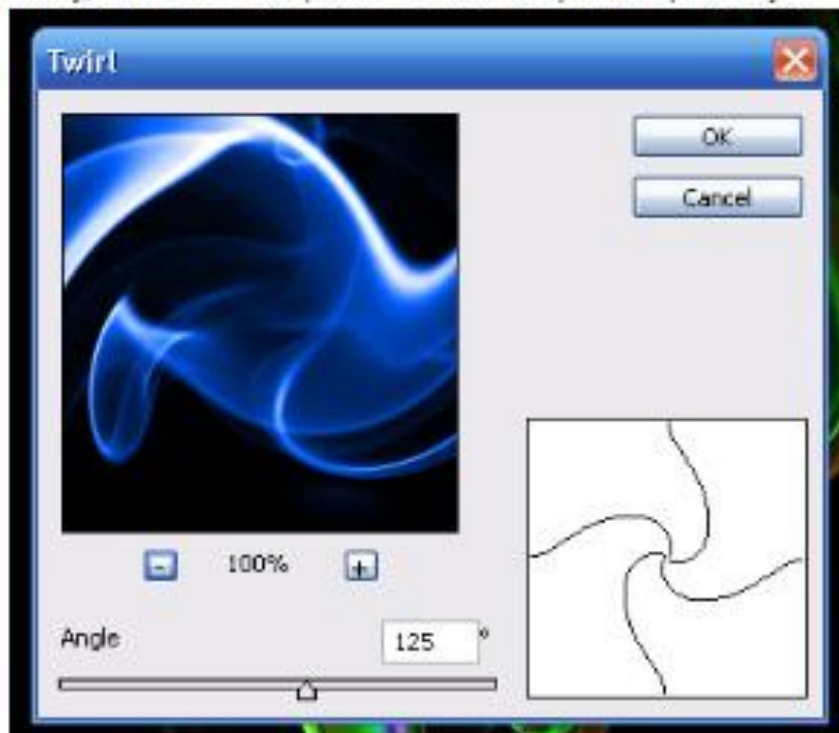
14. Do the same 'duplicate > hue/saturation > merge down > set blending mode to difference' routine one more time to make another layer that is blue. Here are the hue/saturation settings:



And how your image should look now:



15. Finally, add a 'Twirl' filter (Filter > Distort > Twirl) to the top blue layer:



16. And you're done!

